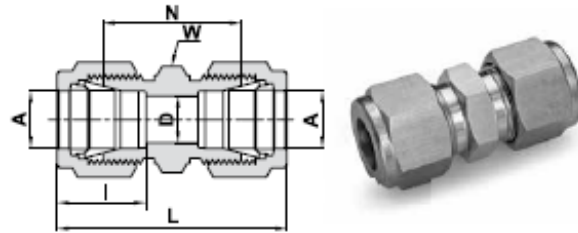


**762 L
UNION**



TUBE (METRIC) TO TUBE (METRIC)

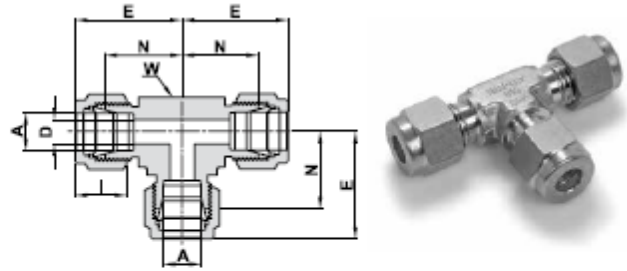
Ordering Information	A Tube O.D.		D		W Hex. Flat	N		L		I	
	mm	mm	mm	mm	mm	mm	mm	mm	mm	mm	mm
762L _ 2	2	1.7			12		22.4		35.6		12.9
762L _ 3	3	2.4			12		22.1		35.3		12.9
762L _ 4	4	2.4			12		24.1		37.3		13.7
762L _ 6	6	4.8			14		26.2		41.0		15.3
762L _ 8	8	6.4			15		28.2		43.2		16.2
762L _ 10	10	7.9			18		31.0		46.2		17.2
762L _ 12	12	9.5			22		31.0		51.2		22.8
762L _ 14	14	11.1			24		31.8		52.0		24.4
762L _ 15	15	11.9			24		31.8		52.0		24.4
762L _ 16	16	12.7			24		31.8		52.0		24.4
762L _ 18	18	15.1			27		33.3		53.5		24.4
762L _ 20	20	15.9			30		34.8		55.0		26.0
762L _ 22	22	18.3			30		34.8		55.0		26.0
762L _ 25	25	21.8			35		40.4		65.0		31.3
762L _ 38	*38	33.7			55		58.4		114.0		49.4
762L _ 50	*50	45.2			3 inch		71.7		146.0		65.0

TUBE (INCH) TO TUBE (INCH)

Ordering Information	A Tube O.D.		D		W Hex. Flat	N		L		I	
	Inch	mm	Inch	mm	Inch	Inch	mm	Inch	mm	Inch	mm
762L _ 1/16	1/16	1.58	.05	1.27	5/16	.69	17.52	.99	25.14	.34	8.6
762L _ 1/8	1/8	3.17	.09	2.28	7/16	.88	22.35	1.40	35.56	.50	12.7
762L _ 3/16	3/16	4.76	.12	3.04	7/16	.95	24.13	1.47	37.33	.54	13.7
762L _ 1/4	1/4	6.35	.19	4.82	1/2	1.03	26.16	1.61	40.89	.60	15.2
762L _ 5/16	5/16	7.93	.25	6.35	9/16	1.11	28.19	1.69	42.92	.64	16.2
762L _ 3/8	3/8	9.52	.28	7.11	5/8	1.19	30.22	1.77	44.95	.66	16.8
762L _ 1/2	1/2	12.70	.41	10.41	13/16	1.22	30.98	2.02	51.30	.90	22.9
762L _ 5/8	5/8	15.87	.50	12.70	15/16	1.25	31.75	2.05	52.07	.96	24.4
762L _ 3/4	3/4	19.05	.62	15.75	1 1/16	1.31	33.27	2.11	53.59	.96	24.4
762L _ 7/8	7/8	22.22	.72	18.28	1 3/16	1.37	34.80	2.17	55.11	1.02	25.9
762L _ 1	1	25.40	.88	22.35	1 3/8	1.59	40.38	2.55	64.77	1.23	31.2
762L _ 1 1/4	*1 1/4	31.75	1.09	27.70	1 3/4	1.89	48.00	3.63	92.20	1.62	41.2
762L _ 1 1/2	*1 1/2	38.10	1.34	34.00	2 1/8	2.11	53.60	4.25	107.95	1.97	50.0
762L _ 2	*2	50.80	1.81	45.97	2 3/4	2.94	74.67	5.88	149.35	2.66	67.6

*Including low friction paste, see page 91

**764 L
UNION TEE**



ALL TUBE (METRIC)

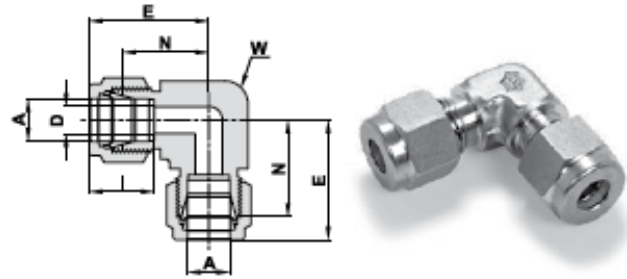
Ordering Information	A Tube O.D.		D		W Wrench Flat		N		E		I	
	mm	mm	mm	mm	Inch	mm	mm	mm	mm	mm	mm	mm
764L_2	2	1.7			3/8	9.5	15.7	22.3	12.9			
764L_3	3	2.4			3/8	9.5	15.7	22.3	12.9			
764L_4	4	2.4			1/2	12.7	18.8	25.4	13.7			
764L_6	6	4.8			1/2	12.7	19.6	27.0	15.3			
764L_8	8	6.4			5/8	15.9	22.4	29.9	16.2			
764L_10	10	7.9			11/16	17.5	23.9	31.5	17.2			
764L_12	12	9.5			13/16	20.6	25.9	36.0	22.8			
764L_14	14	11.1			15/16	23.8	28.7	38.8	24.4			
764L_15	15	11.9			15/16	23.8	28.7	38.8	24.4			
764L_16	16	12.7			15/16	23.8	28.7	38.8	24.4			
764L_18	18	15.1			1 1/16	27.0	29.7	39.8	24.4			
764L_20	20	15.9			1 3/8	34.9	34.5	44.6	26.0			
764L_22	22	18.3			1 3/8	34.9	34.5	44.6	26.0			
764L_25	25	21.8			1 3/8	34.9	36.8	49.1	31.3			
764L_38	*38	33.7			-	55.0	56.4	84.0	49.4			
764L_50	*50	45.2			2 3/4	69.9	68.9	106.0	65.0			

ALL TUBE (INCH)

Ordering Information	A Tube O.D.		D		W Wrench Flat		N		E		I	
	Inch	mm	Inch	mm	Inch	mm	Inch	mm	Inch	mm	Inch	mm
764L_1/16	1/16	1.58	.05	1.27	3/8	9.5	.55	14.00	.70	17.80	.34	8.6
764L_1/8	1/8	3.17	.09	2.28	3/8	9.5	.62	15.74	.88	22.35	.50	12.7
764L_3/16	3/16	4.76	.12	3.04	1/2	12.7	.70	17.80	.96	24.40	.54	13.7
764L_1/4	1/4	6.35	.19	4.82	1/2	12.7	.77	19.55	1.06	26.90	.60	15.2
764L_5/16	5/16	7.93	.25	6.35	5/8	15.9	.88	22.35	1.17	29.71	.64	16.2
764L_3/8	3/8	9.52	.28	7.11	5/8	15.9	.91	23.11	1.20	30.48	.66	16.8
764L_1/2	1/2	12.70	.41	10.41	13/16	20.6	1.02	25.90	1.42	36.06	.90	22.9
764L_5/8	5/8	15.87	.50	12.70	15/16	23.8	1.13	28.70	1.53	38.90	.96	24.4
764L_3/4	3/4	19.05	.62	15.74	1 1/16	27.0	1.17	29.70	1.57	39.90	.96	24.4
764L_7/8	7/8	22.22	.72	18.29	1 3/8	34.9	1.36	34.54	1.76	44.70	1.02	25.9
764L_1	1	25.40	.88	22.35	1 3/8	34.9	1.45	36.83	1.93	49.00	1.23	31.2
764L_1 1/4	*1 1/4	31.75	1.09	27.7	1 11/16	42.9	1.75	44.50	2.62	66.55	1.62	41.2
764L_1 1/2	*1 1/2	38.10	1.34	34.0	2	50.8	2.00	50.80	3.07	77.98	1.97	50.0
764L_2	*2	50.80	1.81	45.97	2 3/4	69.9	2.75	69.85	4.22	107.19	2.66	67.6

*Including low friction paste, see page 91

**765 L
UNION ELBOW**



TUBE (METRIC) TO TUBE (METRIC)

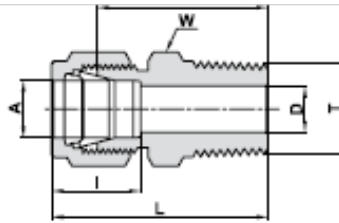
Ordering Information	A Tube O.D.		D		W Wrench Flat		N		E		I	
	mm	mm	mm	mm	Inch	mm	mm	mm	mm	mm	mm	mm
765L_3	3		2.4		3/8	9.5		15.7		22.3		12.9
765L_4	4		2.4		1/2	12.7		18.8		25.4		13.7
765L_6	6		4.8		1/2	12.7		19.6		27.0		15.3
765L_8	8		6.4		9/16	14.3		21.3		28.8		16.2
765L_10	10		7.9		11/16	17.5		23.9		31.5		17.2
765L_12	12		9.5		13/16	20.6		25.9		36.0		22.8
765L_14	14		11.1		15/16	23.8		27.9		38.0		24.4
765L_15	15		11.9		15/16	23.8		27.9		38.0		24.4
765L_16	16		12.7		15/16	23.8		27.9		38.0		24.4
765L_18	18		15.1		1 1/16	27.0		29.7		39.8		24.4
765L_20	20		15.9		1 3/8	34.9		34.5		44.6		26.0
765L_22	22		18.3		1 3/8	34.9		34.5		44.6		26.0
765L_25	25		21.8		1 3/8	34.9		36.8		49.1		31.3
765L_38	*38		33.7		-	55.0		56.4		84.0		49.4
765L_50	*50		45.2		2 3/4	69.9		68.9		106.0		65.0

TUBE (INCH) TO TUBE (INCH)

Ordering Information	A Tube O.D.		D		W Wrench Flat		N		E		I	
	Inch	mm	Inch	mm	Inch	mm	Inch	mm	Inch	mm	Inch	mm
765L_1/16	1/16	1.58	.05	1.27	3/8	9.5	.55	14.00	.70	17.80	.34	.86
765L_1/8	1/8	3.17	.09	2.28	3/8	9.5	.62	15.74	.88	22.35	.50	12.7
765L_3/16	3/16	4.76	.12	3.04	1/2	12.7	.74	18.80	1.00	25.40	.54	13.7
765L_1/4	1/4	6.35	.19	4.82	1/2	12.7	.77	19.55	1.06	26.92	.60	15.2
765L_5/16	5/16	7.93	.25	6.35	9/16	14.3	.84	21.33	1.13	28.70	.64	16.2
765L_3/8	3/8	9.52	.28	7.11	5/8	15.9	.91	23.11	1.20	30.48	.66	16.8
765L_1/2	1/2	12.70	.41	10.41	13/16	20.6	1.02	25.90	1.42	36.06	.90	22.9
765L_5/8	5/8	15.87	.50	12.70	15/16	23.8	1.10	27.94	1.50	38.10	.96	24.4
765L_3/4	3/4	19.05	.62	15.74	1 1/16	27.0	1.17	29.70	1.57	39.90	.96	24.4
765L_7/8	7/8	22.22	.72	18.29	1 3/8	34.9	1.36	34.54	1.76	44.70	1.02	25.9
765L_1	1	25.40	.88	22.35	1 3/8	34.9	1.45	36.83	1.93	49.00	1.23	31.2
765L_1 1/4	*1 1/4	31.75	1.09	27.70	1 11/16	42.9	1.75	44.50	2.62	66.55	1.62	41.2
765L_1 1/2	*1 1/2	38.10	1.34	34.00	2	50.8	2.00	50.80	3.07	77.98	1.97	50.0
765L_2	*2	50.80	1.81	45.97	2 3/4	69.9	2.75	69.85	4.22	107.19	2.66	67.6

* Including low friction paste, see page 91

768 L
MALE CONNECTOR



TUBE (METRIC) MALE NPT THREAD							
Ordering Information	A	T	D	W	N	L	I
	Tube O.D.	(NPT)		Hex. Flat			
	mm	Inch	mm	mm	mm	mm	mm
768L_2 X 1/8	2	1/8	1.7	12	23.9	30.5	12.9
768L_3 X 1/8	3	1/8	2.4	12	23.9	30.5	12.9
768L_3 X 1/4	3	1/4	2.4	14	29.0	35.6	12.9
768L_4 X 1/8	4	1/8	2.4	12	24.6	31.2	13.7
768L_4 X 1/4	4	1/4	2.4	14	29.7	36.3	13.7
768L_6 X 1/8	6	1/8	4.8	14	25.4	32.8	15.3
768L_6 X 1/4	6	1/4	4.8	14	30.5	37.9	15.3
768L_6 X 3/8	6	3/8	4.8	18	31.0	38.4	15.3
768L_6 X 1/2	6	1/2	4.8	22	37.3	44.7	15.3
768L_8 X 1/8	8	1/8	4.8	15	26.7	34.2	16.2
768L_8 X 1/4	8	1/4	6.4	15	31.2	38.7	16.2
768L_8 X 3/8	8	3/8	6.4	18	31.8	39.3	16.2
768L_8 X 1/2	8	1/2	6.4	22	38.1	45.6	16.2
768L_10 X 1/8	10	1/8	4.8	18	28.7	36.3	17.2
768L_10 X 1/4	10	1/4	7.9	18	33.3	40.9	17.2
768L_10 X 3/8	10	3/8	7.9	18	33.3	40.9	17.2
768L_10 X 1/2	10	1/2	7.9	22	38.9	46.5	17.2
768L_10 X 3/4	10	3/4	7.9	27	40.4	48.0	17.2
768L_12 X 1/8	12	1/8	4.8	22	28.7	38.8	22.8
768L_12 X 1/4	12	1/4	7.1	22	33.3	43.4	22.8
768L_12 X 3/8	12	3/8	9.5	22	33.3	43.4	22.8
768L_12 X 1/2	12	1/2	9.5	22	38.9	49.0	22.8
768L_12 X 3/4	12	3/4	9.5	27	40.4	50.5	22.8
768L_14 X 1/4	14	1/4	7.1	24	34.0	44.1	24.4
768L_14 X 3/8	14	3/8	9.5	24	34.0	44.1	24.4
768L_14 X 1/2	14	1/2	11.1	24	38.9	49.0	24.4
768L_15 X 1/2	15	1/2	11.9	24	38.9	49.0	24.4
768L_16 X 3/8	16	3/8	9.5	24	34.0	44.1	24.4
768L_16 X 1/2	16	1/2	11.9	24	38.9	49.0	24.4
768L_16 X 3/4	16	3/4	12.7	27	40.4	50.5	24.4
768L_18 X 1/2	18	1/2	11.9	27	40.4	50.5	24.4
768L_18 X 3/4	18	3/4	15.1	27	40.4	50.5	24.4
768L_20 X 1/2	20	1/2	11.9	30	42.2	52.3	26.0
768L_20 X 3/4	20	3/4	15.9	30	42.2	52.3	26.0
768L_22 X 3/4	22	3/4	15.9	30	42.2	52.3	26.0
768L_22 X 1	22	1	18.3	35	47.0	57.1	26.0
768L_25 X 1/2	25	1/2	11.9	35	45.2	57.5	31.3
768L_25 X 3/4	25	3/4	15.9	35	45.2	57.5	31.3
768L_25 X 1	25	1	21.8	35	50.0	62.3	31.3
768L_38 X 1 1/2	*38	1 1/2	33.7	55	64.0	91.6	49.4
768L_50 X 2"	*50	2	45.2	3 inch	76.2	113.3	65.0

* Supplied assembled with Nuts and Ferrules. For low friction paste, see page 91
 D - Dimension is minimum opening. Dimensions are for reference only, and are subject to change without notice.

Cont'd next page