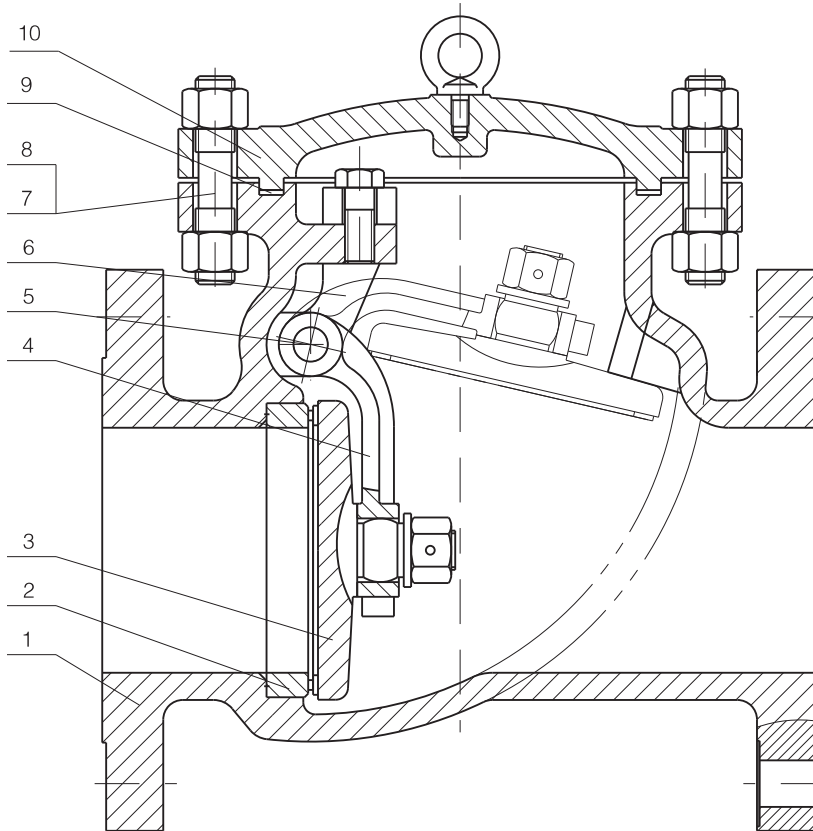


Cast Steel Swing Check Valve (Bolt Cover)



Applicable Standards:

Design and Manufacture :BS1868
Face to Face and End to End: ASME B 16.10
Flanged ends: ASME B16.5
Butt welded ends: ASME B16.25
Test & Inspection: API 598

Main Materials:

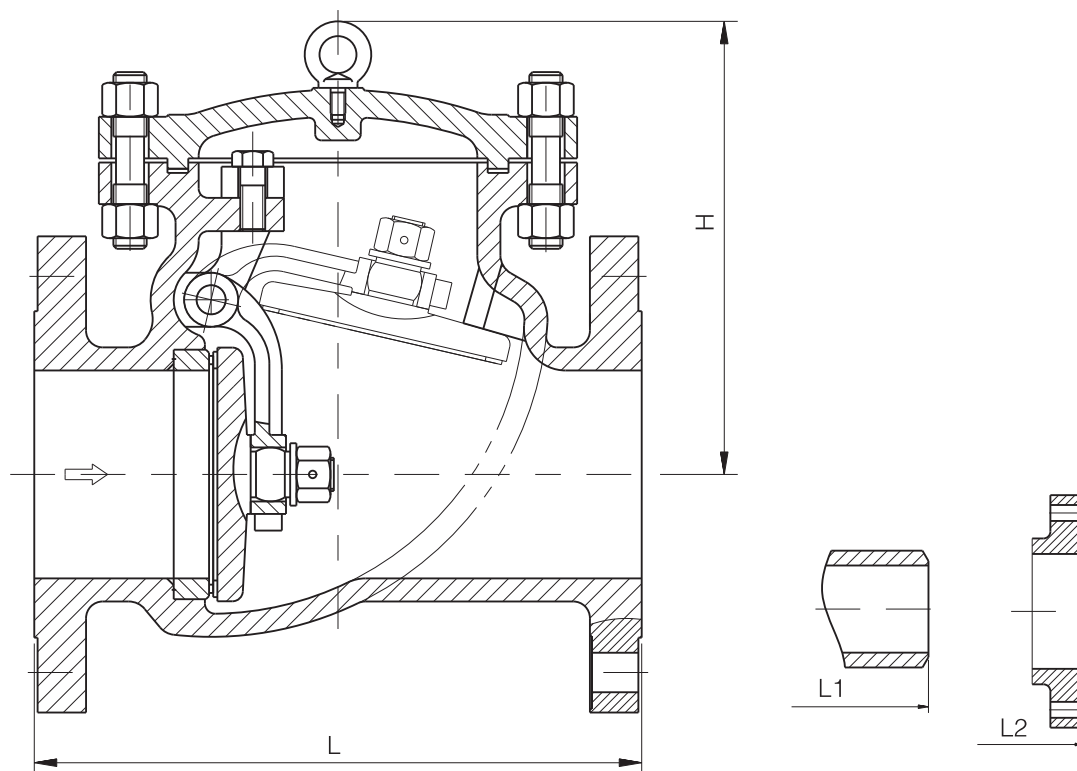
WCB, LCB, WC6, WC9, CF8, CF8M,
CF3, CF3M, A995 4A, A995 5A, A995 6A,
Alloy 20, Monel, Inconel

Main Parts Material Sheet

NO.	PART	ASTM Material				
		WCB	LCB ⁽¹⁾	WC6	CF8(M)	CF3(M)
1	BODY	A216 WCB	A352 LCB	A217 WC6+STL	A351 CF8(M)+STL	A351 CF3(M)+STL
2	SEAT	A216 WCB+13Cr	A352 LCB+13Cr	—	—	—
3	DISC	A216 WCB+13Cr	A352 LCB+13Cr	A217 WC6+STL	A351 CF8(M)	A351 CF3(M)
4	HINGE	A216 WCB	A182 F6	A182 F6	A351 CF8(M)	A351 CF3(M)
5	HINGE PIN	A276 304	A182 F6	A182 F6	A182 F304(F316)	A182 F304(F316)
6	FORK	A216 WCB	A352 LCB	A217 WC6	A351 CF8(M)	A351 CF3(M)
7	COVER BOLT	A193 B7	A320 L7	A193 B16	A193 B8(M)	A193 B8(M)
8	COVER NUT	A194 2H	A194 7	A194 4	A194 8(M)	A194 8(M)
9	GASKET	SS304+GRAPHITE			PTFE/SS304+GRAPHITE	PTFE/SS316+GRAPHITE
10	COVER	A216 WCB	A352 LCB	A217 WC6	A351 CF8(M)	A351 CF3(M)

Different Trim are available upon request.

Cast Steel Swing Check Valve (Bolt Cover)



Dimensions CLASS 150

Size	in	1/2	3/4	1	1 1/2	2	2 1/2	3	4	6	8	10	12	14	16	18	20	24	26
	mm	15	20	25	40	50	65	80	100	150	200	250	300	350	40	450	500	600	650
L/L1 (RF/BW)	in	4.25	4.62	5.00	6.50	8.00	8.50	9.50	11.50	14.00	19.50	24.50	27.50	31.00	34.00	38.50	38.50	51.00	-
	mm	108	117	127	165	203	216	241	292	356	495	622	699	787	864	978	978	1295	-
L2 (RTJ)	in	-	-	-	-	8.50	9.00	10.00	12.00	14.50	20.00	25.00	28.00	31.50	34.50	39.00	39.00	21.50	-
	mm	-	-	-	-	216	229	254	305	368	508	635	711	800	876	991	991	1308	-
H (Open)	in	3.12	3.38	3.88	4.38	6.00	6.50	6.88	8.00	11.50	13.88	15.38	17.00	18.75	20.62	22.88	24.62	24.75	-
	mm	80	85	100	110	152	165	175	204	293	353	390	432	475	525	582	627	883	-

Dimensions CLASS 300

Size	in	1/2	3/4	1	1 1/2	2	2 1/2	3	4	6	8	10	12	14	16	18	20	24	26
	mm	15	20	25	40	50	65	80	100	150	200	250	300	350	40	450	500	600	650
L/L1 (RF/BW)	in	6.00	7.00	8.00	9.00	10.50	11.50	12.50	14.00	17.50	21.00	24.50	28.00	33.00	34.00	38.50	40.00	53.00	-
	mm	152	178	203	229	267	292	318	356	445	533	622	711	838	864	978	1016	1346	-
L2 (RTJ)	in	-	-	-	-	11.12	12.12	13.12	14.62	18.12	21.62	25.12	28.62	33.62	34.62	39.12	40.75	53.88	-
	mm	-	-	-	-	283	308	333	371	460	549	638	727	854	879	994	1035	1368	-
H (Open)	in	3.12	3.38	3.88	4.38	6.00	6.50	6.88	8.00	11.50	13.88	15.38	17.00	18.75	20.62	22.88	24.62	34.75	-
	mm	80	85	100	110	152	165	175	204	293	353	390	432	475	525	582	627	883	-